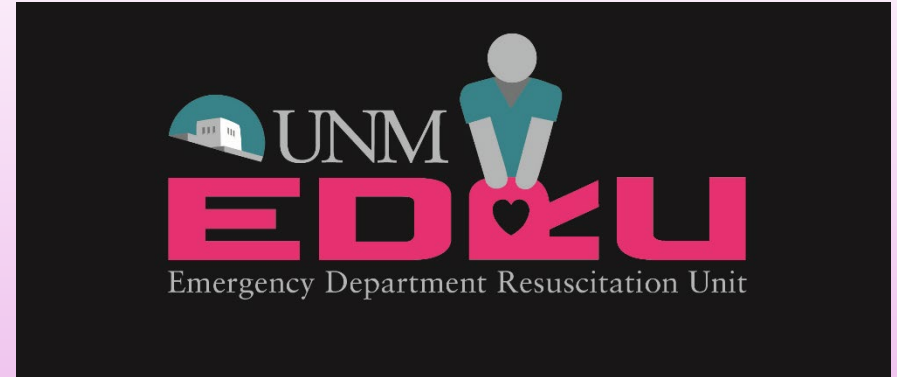




Arterial line transduction set-up tutorial

▶ Arterial line Set-up

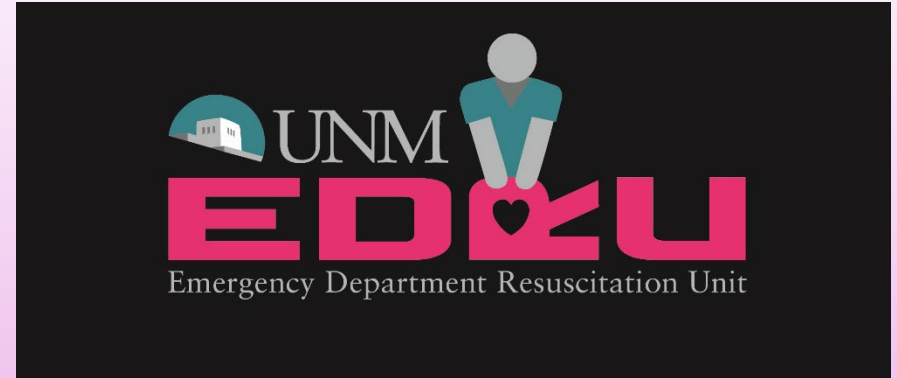
1. **Organize Equipment**
2. **Set up pressure bag & prime tubing**
3. **Zero transducer to atmospheric pressure**



▶ Organize Equipment

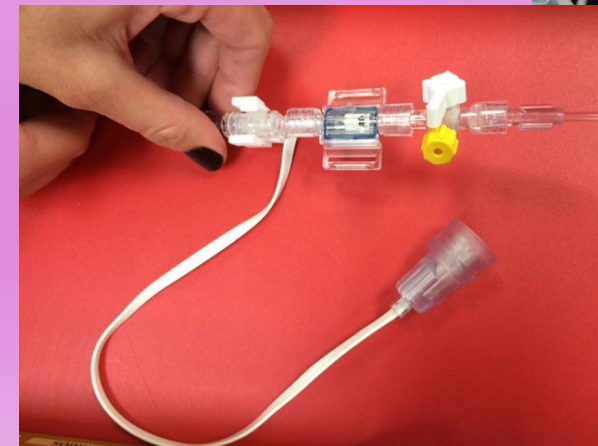
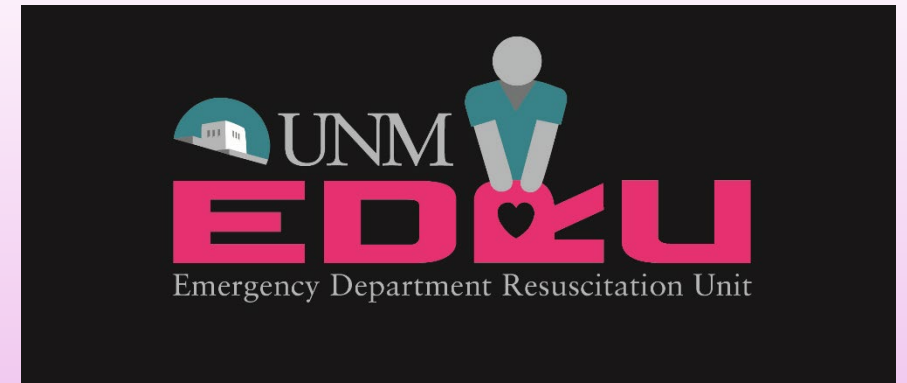
▶ Red Arterial line Box

- ▶ Liter bag of NS
- ▶ Arterial line tubing/
transducer
- ▶ Monitor cable
- ▶ Arterial line catheter



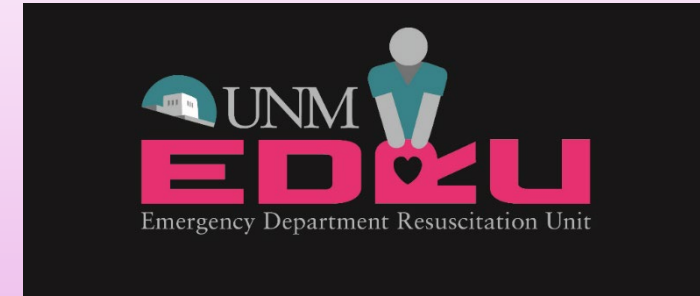
▶ Pressure bag/ Priming

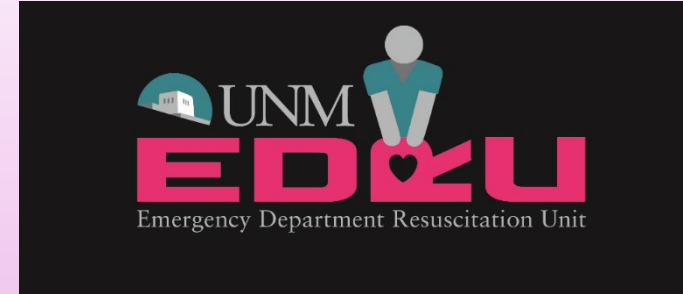
- ▶ **Remove air from NS**
- ▶ **Prime tubing (removing all air bubbles)**
- ▶ **Replace vented caps (white) with non-vented caps (yellow)**
- ▶ **Inflate pressure bag to 300 mm Hg**
- ▶ **Turn pressure bag stop-cock upwards to prevent deflation**
- ▶ **Connect monitor cable to transducer & left most red port monitor**
- ▶ **Connect to patient**



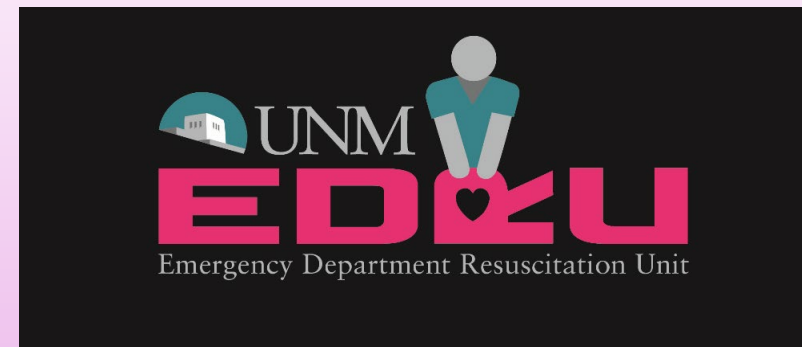
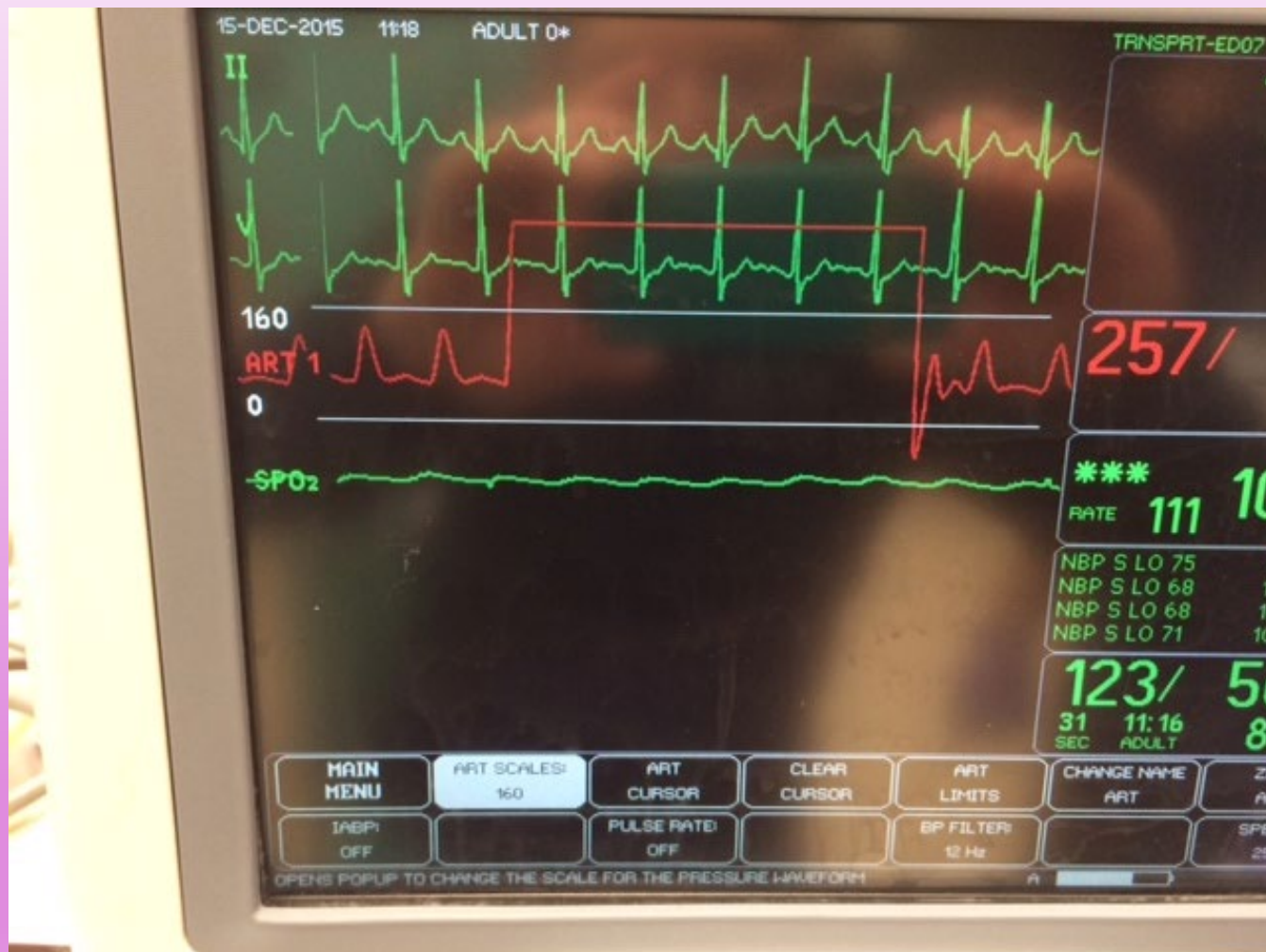
▶ Zero Transducer

- ▶ **Secure transducer to phlebostatic axis**
- ▶ **Turn stop-cock off to patient & open to air**
- ▶ **Remove yellow cap from stop-cock port**
- ▶ **Zero function on the monitor**
- ▶ **Once it reads “0” replace the yellow stop-cock**
- ▶ **Check square wave response to evaluate dampening of waveform**





Phlebostatic axis



Square Wave test